



Production Guide

TECHNICAL SPECIFICATIONS

Box Office Hours: 10am-5pm (M-F)

Rev. June 28, 2022

TABLE OF CONTENTS

General contact information	3	Led Screen Information	28
Map & directions	3	Power Distribution	30
Public transit, truck, bus & vehicle parking	4	Dressing room information	31
Loading dock information	5	Laundry room	33
Seating information and capacity	7	Catering room	34
Stage specifications	12	Vehicle admission	35
Rigging specifications	16	On-Demand Internet service	36
Additional equipment	19	Productions services	37
Sound Equipment	20		
Lighting Equipment	23		
Video Equipment	26		

GENERAL CONTACT INFORMATION

PRODUCTION STAFF

- Event Manager – Ernesto Pérez, (787)904-8730
email: erperez@cocacolamusichall.com

ADDITIONAL CONTACTS INFORMATION

- IT Manager – Israel Rivera, (939)295-2153
email: irivera@cocacolamusichall.com
- Food & Bev. Manager – Luis Vazquez, (787)462-9001 email:
lvazquez@levyrestaurants.com
- AGM – Arleene Pérez, (787)632-4585
email: arperez@cocacolamusichall.com
- GM – Jorge Pérez, (787)690-5653
email: jperez@cocacolamusichall.com

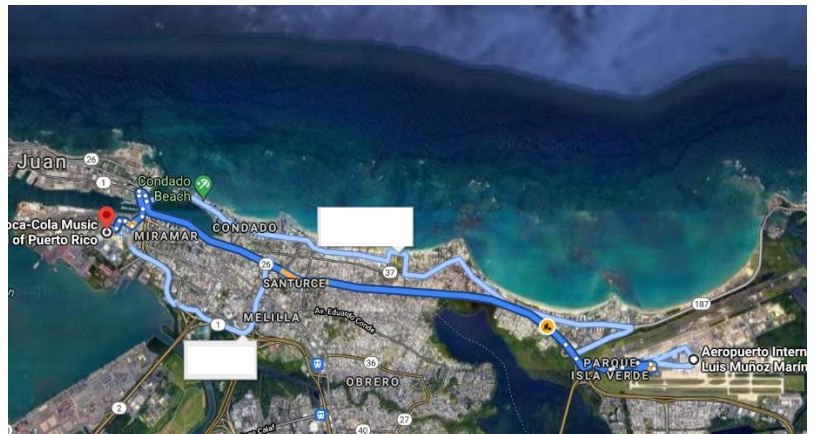
MAP & DIRECTIONS

The Coca-Cola Music Hall is conveniently located on the west corner of the Distrito T-Mobile property in San Juan, Puerto Rico.

DIRECTIONS:

From Luis Muñoz Marín International Airport: Merge onto Expreso Roman Baldorioty de Castro/PR-26. Continue Avenida Manuel Fernandez Juncos/PR-1 N to your destination.

For more information on ground transportation, Google Maps works easily in Puerto Rico.





PUBLIC TRANSIT

GENERAL PARKING

Accessible parking is located on both sides of Puerto Rico Convention Center: East and West Parking Lots. Also, guest can park on Magenta Lot located on Coca-Cola Music Hall backstreet.

Guest Drop-Off & Pick-Up at the corner of the A-Loft Hotel

VALET PARKING

This area is located walking distance from the Coca-Cola Music Hall. Valet Parking is located at the corner between the A-Loft Hotel and the Box Office of the Coca-Cola Music Hall.

TRUCK, BUS & VEHICLE PARKING

Truck, bus, and vehicle parking on site is limited. Please inquire with Event Manager prior to arrival.

All parking arrangements must be discussed with Event Manager prior to the event for necessary passes and badges.

The loading docks are located on the west side of the building.

Only 2 trucks, busses can remain in the loading dock while the load in. For permissions to remain after load in, please contact Event Manager.

GPS Address: Coca-Cola Music Hall 300 Convention Boulevard, San Juan, 00907

COCA-COLA MUSIC HALL LOADING DOCK (BEHIND STAGE)

Loading door #1:

WIDTH: 26'
HEIGHT: 14'

Loading door #2:

WIDTH: 26'
HEIGHT: 12'

Loading dock space available for two (2) 53' cargo containers and one (1) small truck



Another loading access is located on Plaza Level (stage front)

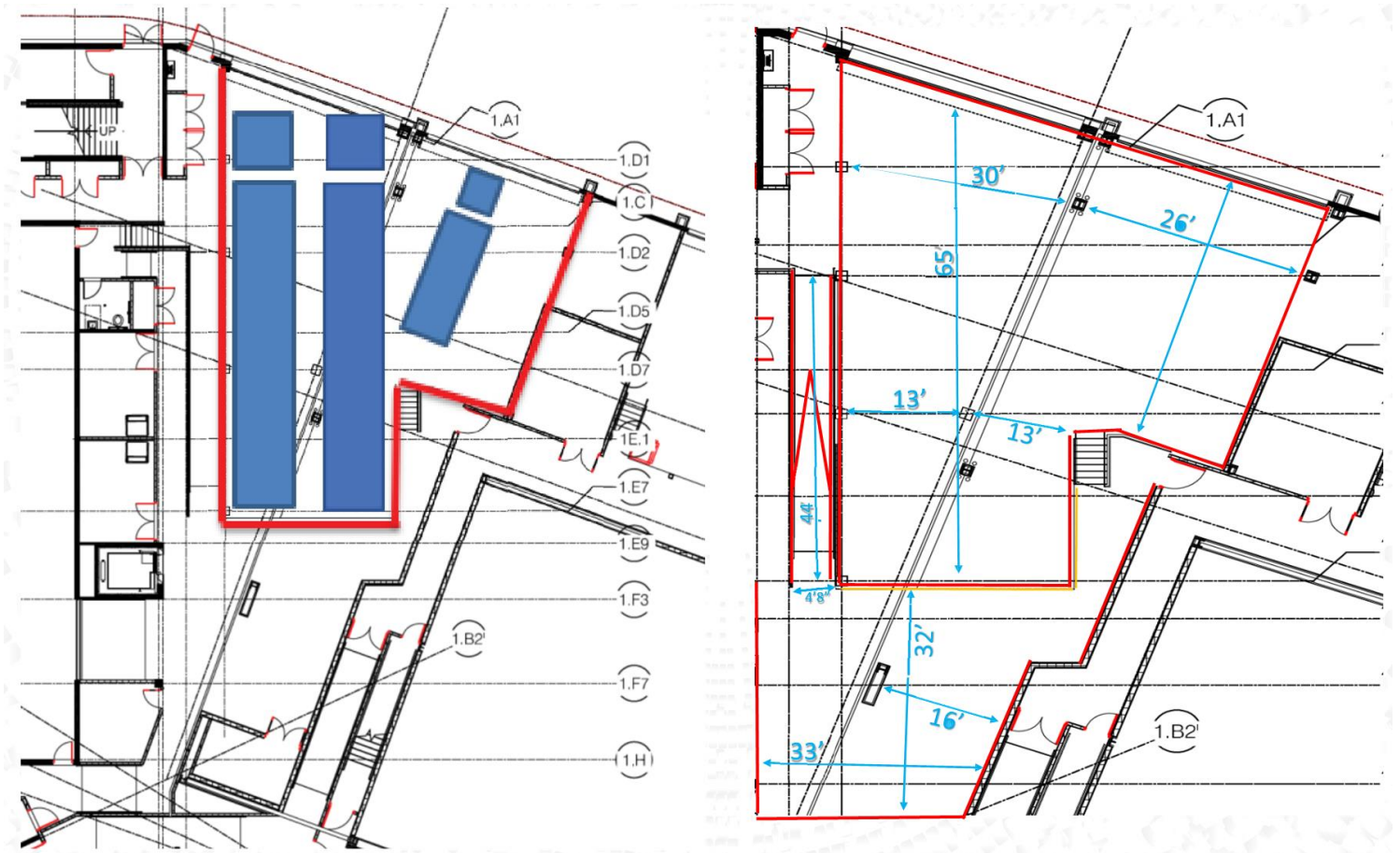
WIDTH: 93"



HEIGHT: 107"



COCA-COLA MUSIC HALL
LOADING DOCK MEASUREMENTS



SEATING INFORMATION AND CAPACITY

OVERALL CAPACITIES

Theater Overall Capacity: 3,909 ppl

Plaza Level: 3,048 ppl

Premium Club Level: TBD ppl

Balcony Level: 861 ppl (Fixed Seats)

There are a total of 40 ADA Seats throughout the 3 Levels.

Standing Overall Capacity: 4,861 ppl

Plaza Level: 4,000 ppl

Premium Club Level: TBD ppl

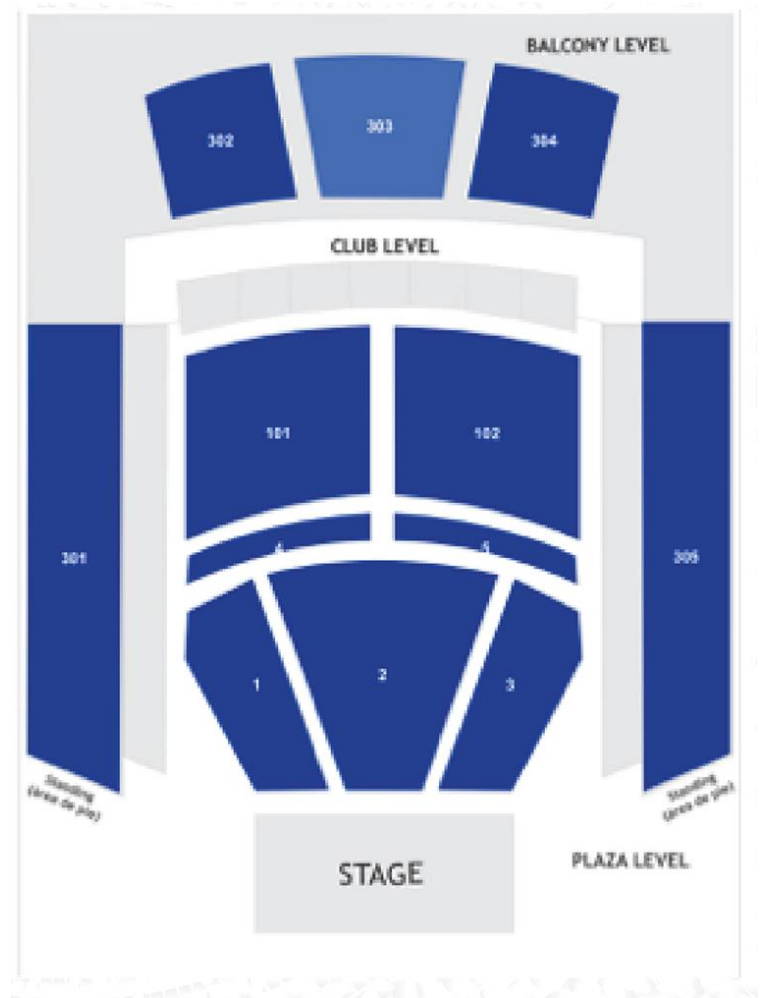
Balcony Level: 861 ppl (Fixed Seats)

Square Footage of Coca-Cola Music Hall

Plaza Level: 50,771 sq. ft.

Premium Club Level: 51,027 sq. ft.

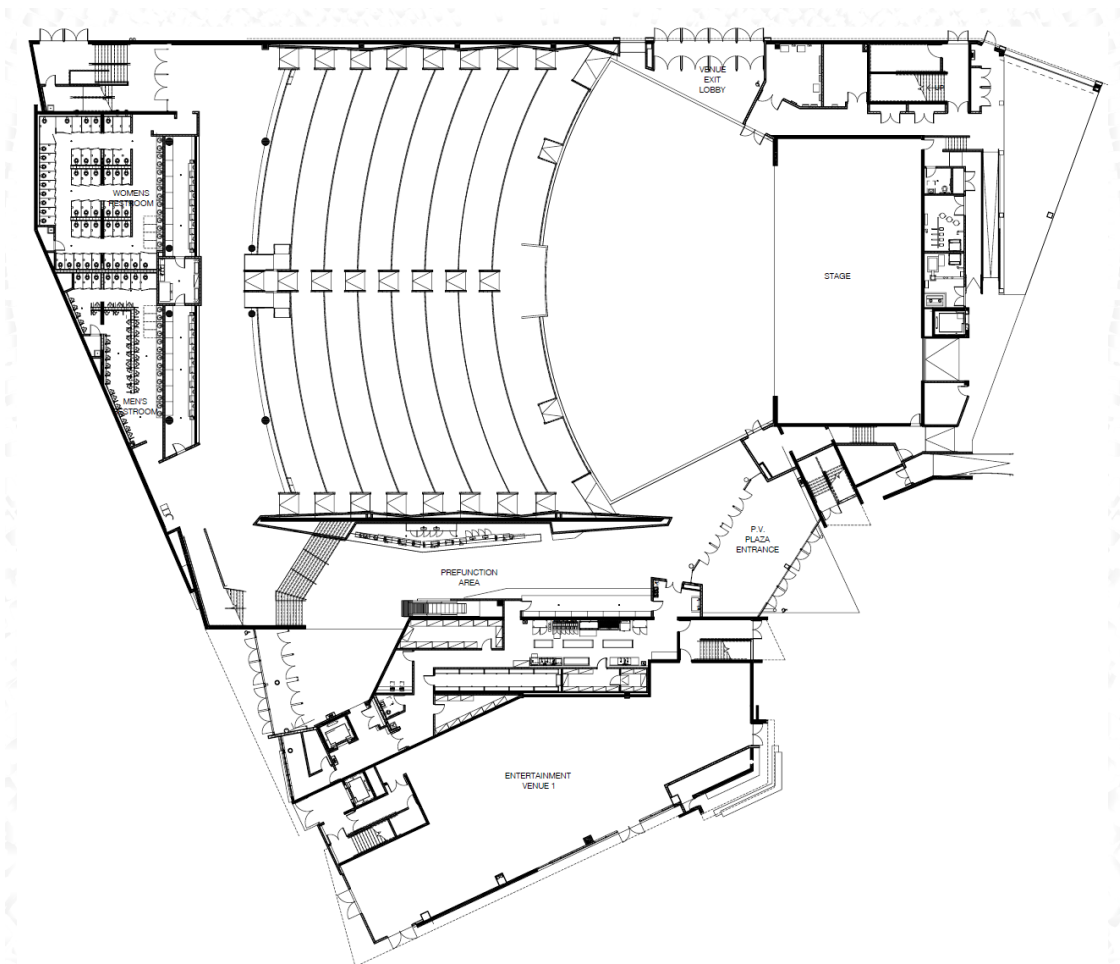
Balcony Level: 27,100 sq. ft.



PLAZA LEVEL (FIRST FLOOR) Standing

Standing Overall Capacity: 4,861 ppl

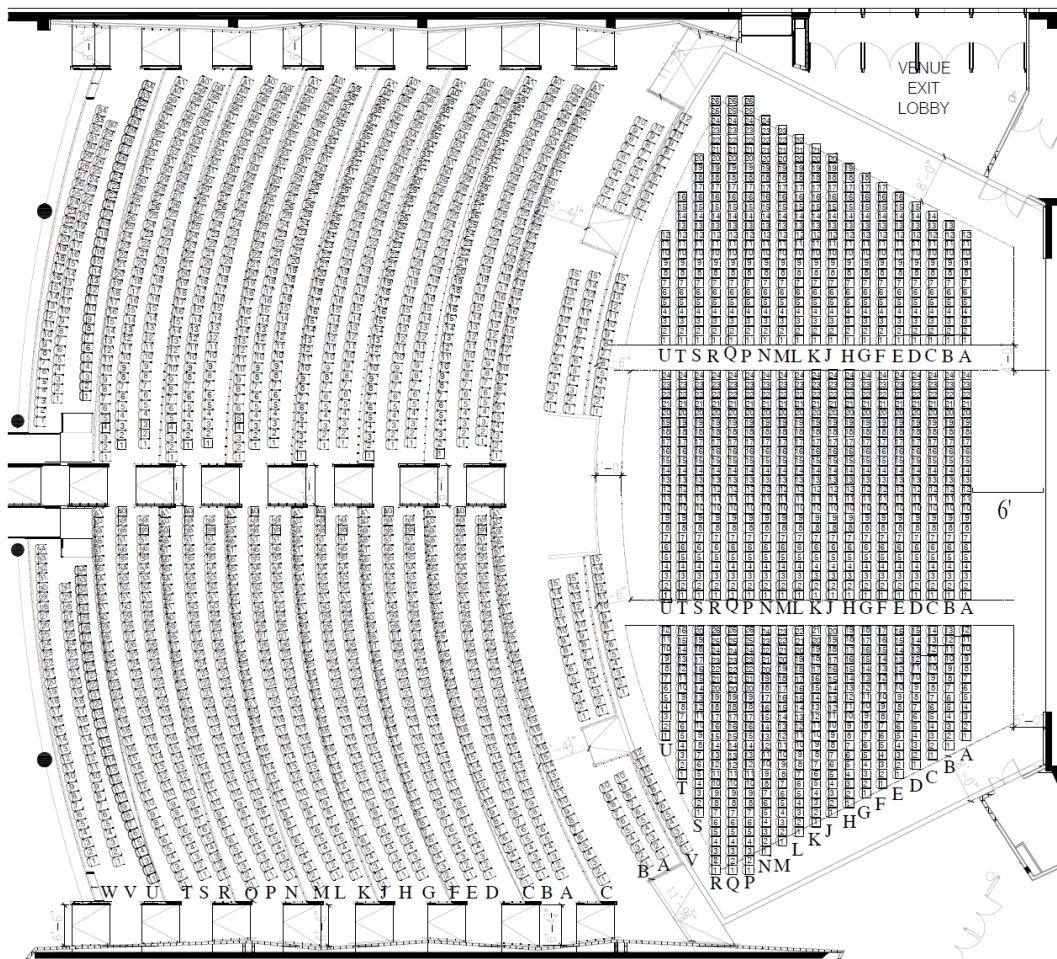
Plaza Level: 4,000 ppl



PLAZA LEVEL (FIRST FLOOR) SEATING CHART

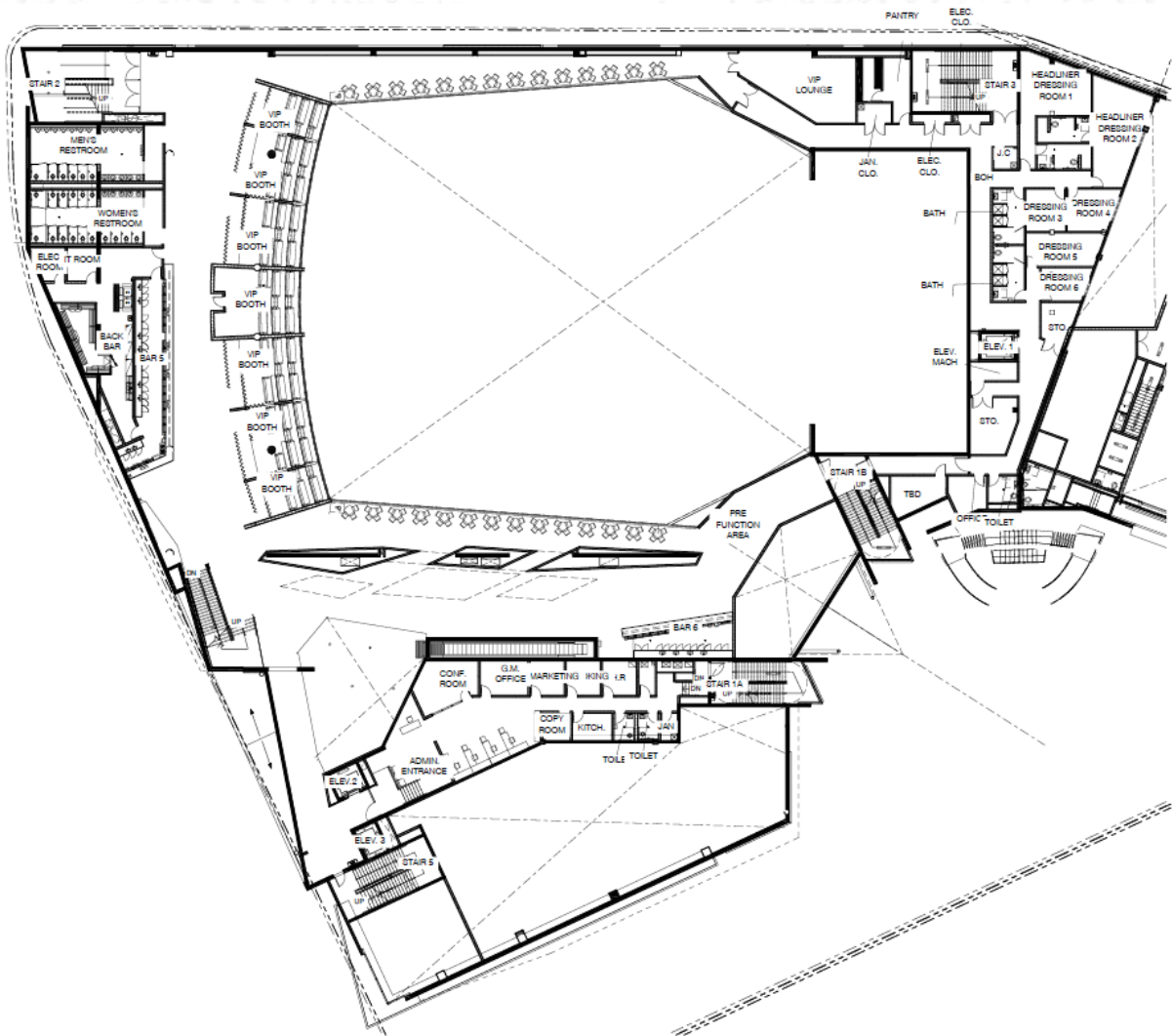
Seating Overall Capacity: 3,909 ppl

Plaza Level: 3,048 ppl



PREMIUM CLUB LEVEL

Premium Club Level: TBD ppl (off promoter's manifest)



BALCONY LEVEL

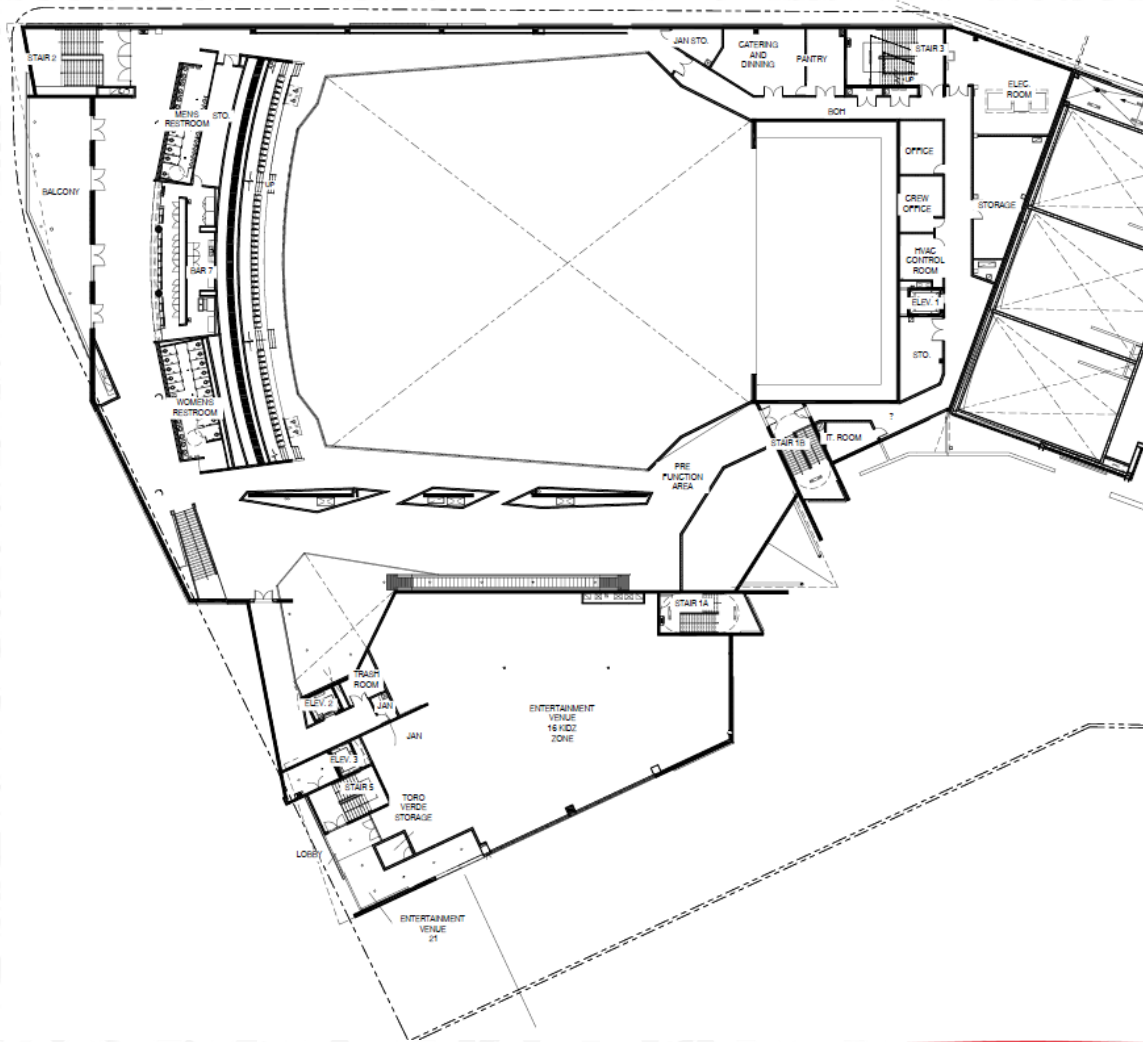
Seating Chart

Section 302: 250

Section 303: 360

Section 304: 251

Balcony Level (Fixed seats): 861 ppl



STAGE



*Stage Front View

STAGE SPECIFICATIONS

STAGE FLOOR is a smooth level surface finished with black wood stagelam ¼. Any damage to floor incurred by production must be restored.

STAGE FLOOR

- HEIGH OF STAGE: 4ft 6in
- WIDTH OF STAGE : 80ft
- DEPTH OF STAGE: 40ft
- WIDTH OF STAGE (CENTER TO SR): 40ft
- WIDTH OF STAGE (CENTER TO SIL): 40ft

STAGE FLOOR BETWEEN CURTAINS

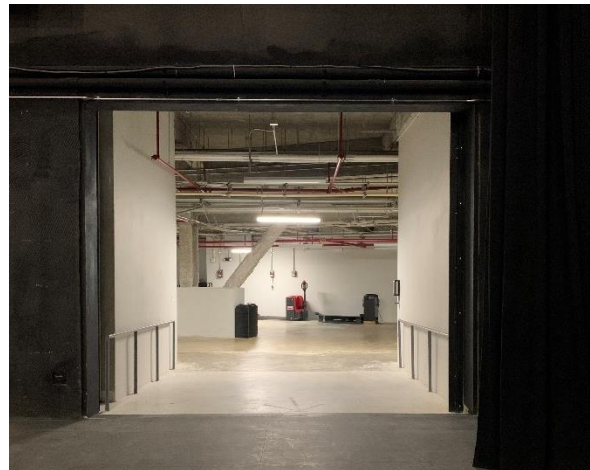
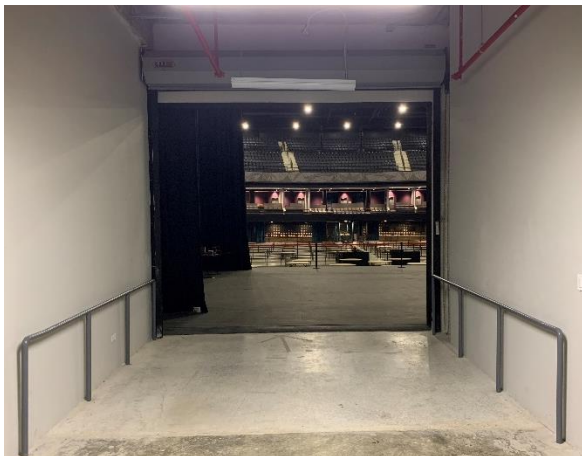
- DEPTH OF STAGE BETWEEN FRONT AND BACK CURTAINS: 35ft
- WIDTH BETWEEN GRAND DRAPE FULL OPEN: 60ft
- HEIGH BETWEEN STAGE FLOOR AND DRAPE: 40ft

CLEARANCE TO UNDERSIDE OF CATWALKS

- HEIGH BETWEEN STAGE FLOOR AND CATWALK: 4ft
- HEIGH BETWEEN PLAZA LEVEL FRONT STAGE AND CATWALK: 58ft
- CATWALK WIDTH: 80ft
- CATWALK DEPTH: 80ft

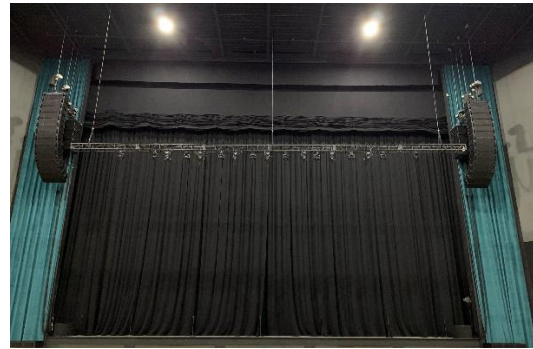
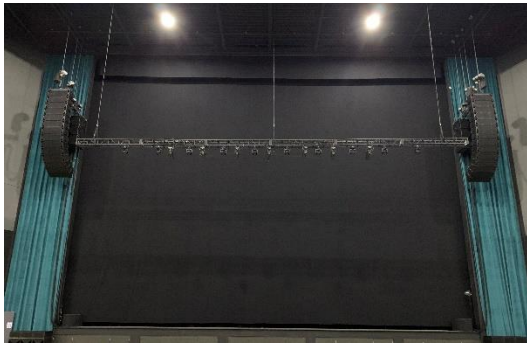
STAGE ACCESS FOR LOAD-IN

- STAGE ROLLING DOOR WIDTH: 12ft
- STAGE ROLLING DOOR HEIGH; 10ft



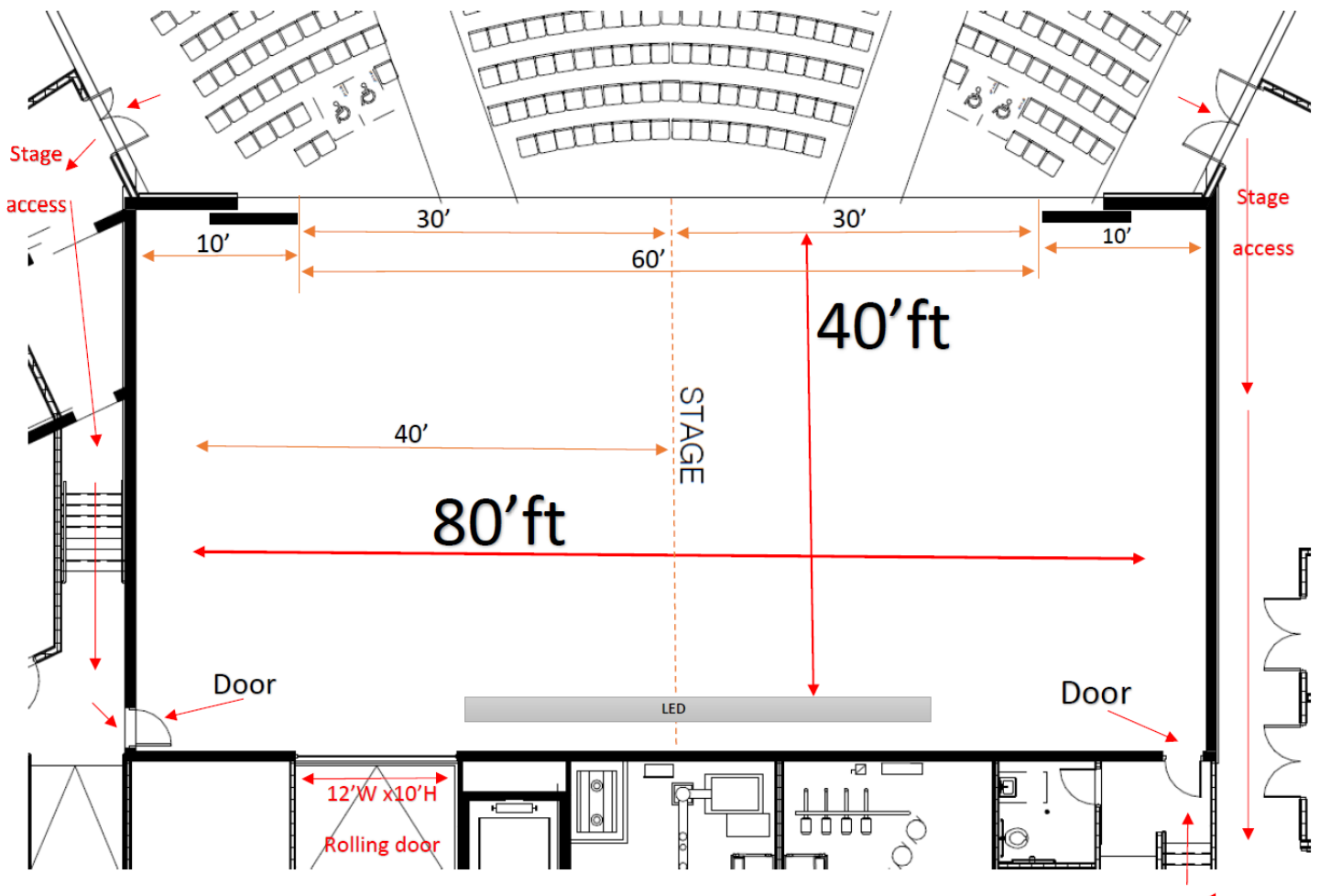
STAGE THRUST

The Stage Thrust has one configuration and is primary used as a stage extension. If performance does not require the stage thrust this needs to be discussed during the show advance. There are three black fire-retardant Stage Thrust installed. All three of them are motorized for a smooth open/close.



Thrust controls are located on FOH and CATWALK.

STAGE MEASUREMENTS



RIGGING SPECIFICATIONS

Counterweight system is a double purchase over-hung system with 71 hand operated line sets with one operating position available, SL gallery at 24' 3" from stage deck.

The grid is a walk on Gridiron Channel deck. Wells are located at center and 10' & 20' L and R from center.

NUMBER OF AVAILABLE LINE SETS: 71 line sets - 6" on center

ROOF CEILING HEIGHT: 82'

GRID HEIGHT: 74' 3" to underside

GRID DEPTH: 34'

GRID WELLS: 10"

TRAVEL DISTANCE: 70' (from 4' pipe in position.)

OPTIMUM DROP HEIGHT: 24'

MAX LIVE LOAD WEIGHT: 1,100lb

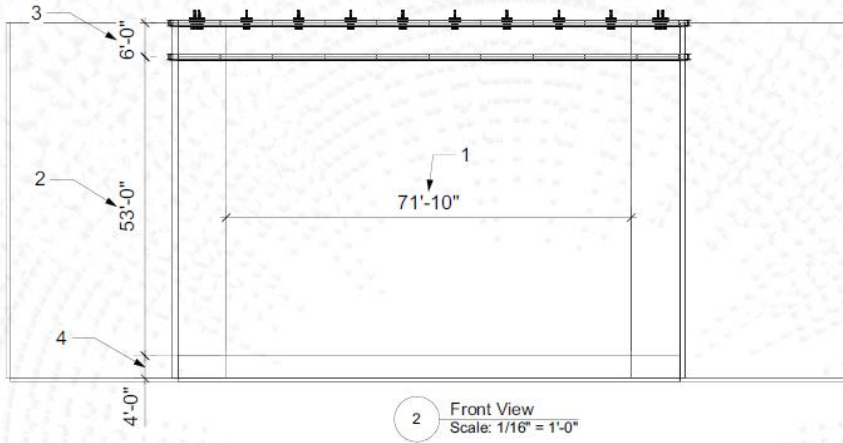
TOTAL WEIGHT AVAILABLE: 70,000lb

LENGTH OF BATTENS: 55' (4' extensions available)

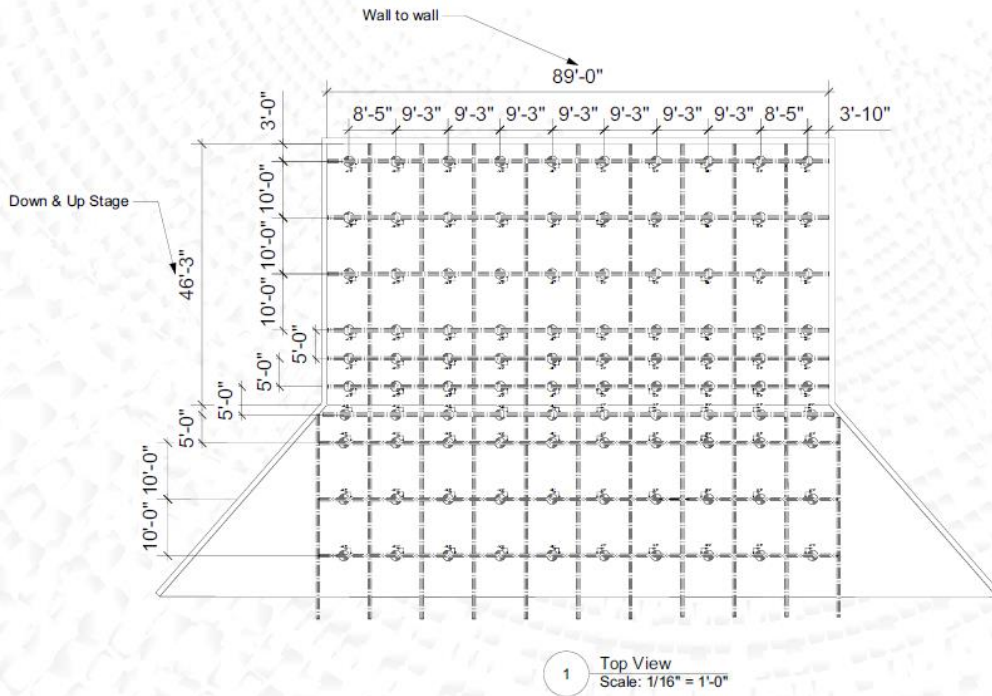
STACKING MOTORS

There are (2) stacking motors onstage. There is (1) (1/2) ton motor located on SR and (1) (1/2) ton motor located on SL

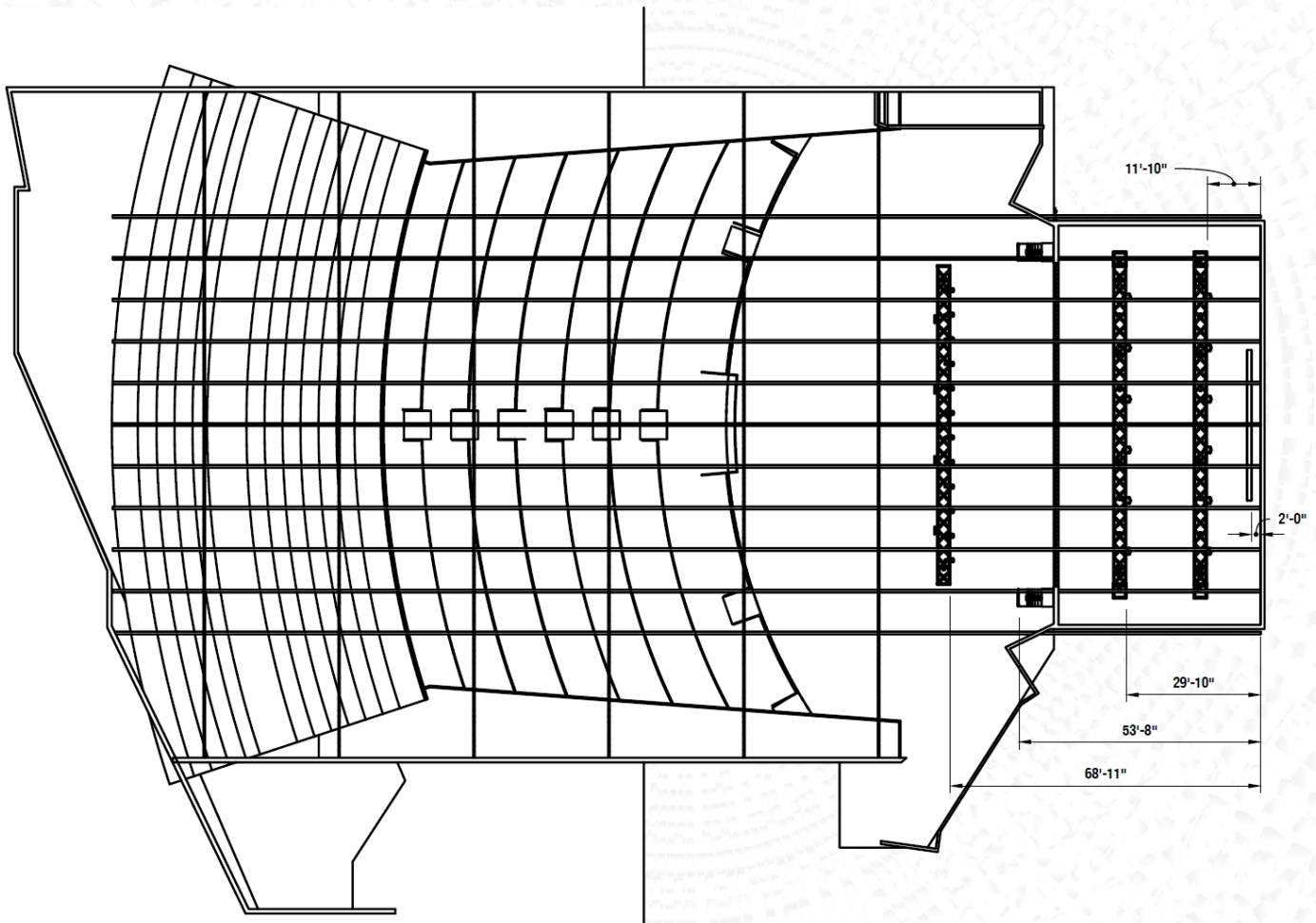
MEASUREMENTS & RIGGING PLOT



- General Notes
1. Proscenium
 2. Height from Stage to Grid
 3. Height from Stage to Rigging Point
 4. Arena to Stage



RIGGING GRID



ADDITIONAL EQUIPMENT

Twenty (20) mojo stage barriers all black

Eight (8) split blackpipe and drape all black

Thirty (30) bike rack barrier all black

Twenty four (24) stations

DECK:

All deck is fixed height, reversable black poly trac/gray carpet surface platforms

Deck Units Description

Ten (10) deck total, reversable black poly trac/gray carpet surface (size: 4'x8' each)

Z-Legs:

Four (4) 12"H at 4'x8'

Four (4) 24"H at 4'x8'

Four (4) 32"H at 4'x8'

Four (4) 40"H at 4'x8' with adapter for bridge panel

STEP UNITS:

Units Description:

Two (2) 24" - 32" step adjustable units

Two (2) 32" - 40" step adjustable units

SOUND EQUIPMENT



*Exclusive provider

SOUND EQUIPMENT CCMH

AUDIO POWER

- Stage Left 100amp Service
- Shared with PA. Cam lock thru tie in at stage left amp racks

PA (PER SIDE):

- Main Hang: 14 x Clair Brothers Co-12's
- Flown Subs: 3 x Clairs CP-218's
- Ground Subs: 3 x Clair CP-218's
- Front Fills: 4 x Clair P2's

PA DRIVE:

- Analog, AES, or Dante
- Left
- Right
- Ground Sub
- Front Fill
- Delay, driven off L/R

FOH CONTROL PACKAGE:

- Yamaha QL 5 (64 Ch Split)
- Lake LM 44 Drive rack
- Wireless Lake EQ / Control
- Smart rig

MON CONTROL PACKAGE

- 1 x Yamaha QL 5 (64 Ch Split)
- 2 x Yamaha Rio 3224 – D2 32 in/ 16 out/ 4 AES out (Shared with FOH)
- 12 x Clair 12am Wedge (10 mixes)
- 2 x Clair C0-8 w/ Double 18 Sub Side fill (Per Side)
- 1 x Clair BT 118 Drum sub
- 2 x Clair P2 Drum top

WIRELESS MICS:

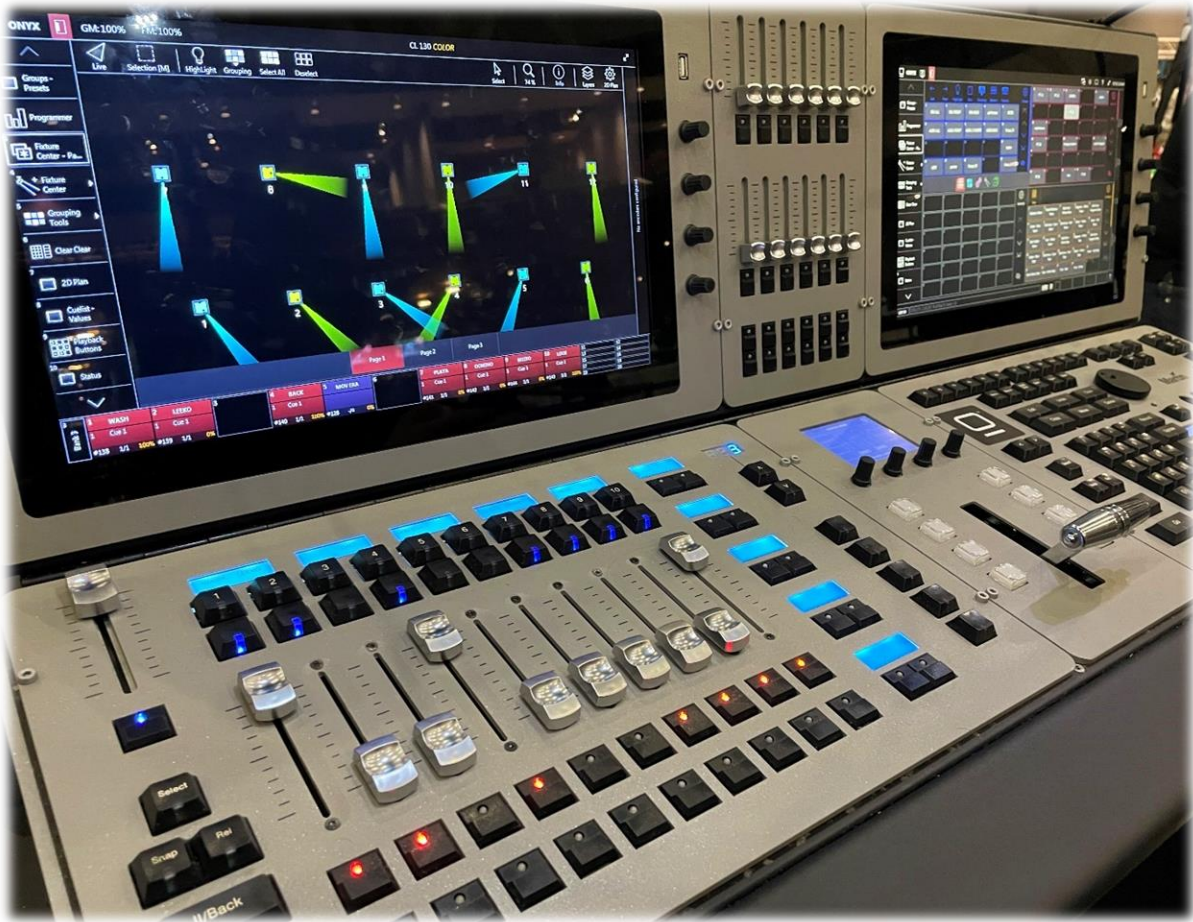
- 1 x Shure ULXD Quad RX 572-637 Mhz
- 2 x ULXD 2 Handheld Tx
- 2 x ULXD 1 Belt pack Tx
- 8 x SB 900 rechargeable batteries

SOUND EQUIPMENT

HOUSE MIC PACKAGE:

- 6 Mic, Shure, Beta 58A, Supercardioid, Dynamic
- 4 Mic, Shure, Beta 87A, Supercardioid, Condenser
- 1 Mic, Shure, Beta 91A, Boundary. Half Cardioid, Condenser
- 1 Mic, Shure, Beta 52A, Supercardioid, Dynamic
- 8 Mic, Shure, Beta 57A, Supercardioid, Dynamic
- 4 Mic, Shure, SM 58, Cardioid, Dynamic
- 3 Mic, Shure, Beta 181/S, Supercardioid, capsule
- 3 Mic, Shure, Beta RPM181, Preamp for 181 Side Address Capsules, Condenser
- 4 Mic, Shure, KSM137, Cardioid, Pencil Condenser
- 2 Mic, Shure, KSM32 Cardioid, Studio Condenser
- 3 Mic, Shure, Beta SM81, Cardioid Pencil Condenser
- 6 Mic, Shure, Beta 98, Miniature Cardioid, Condenser
- 6 Mic, Shure, Beta 98AMP, Miniature Cardioid
- 1 Mic, Senheiser, e602-11, Cardioid, Dynamic, Kick Drum Mic
- 16 Drect Box, Countryman, DT85-FET, Mono, Active
- 2 RF, Shure, RPW112, SM58 Wireless Capsule
- 2 Mic, Shure, WL185 lavalier, TA4F, cardioid
- 2 RF, Shure, WA 304, instcable for Shure bodypack, TA 4F to ¼” angle
- 2 RF, Shure, Beta 58A capsule

LIGHTING EQUIPMENT

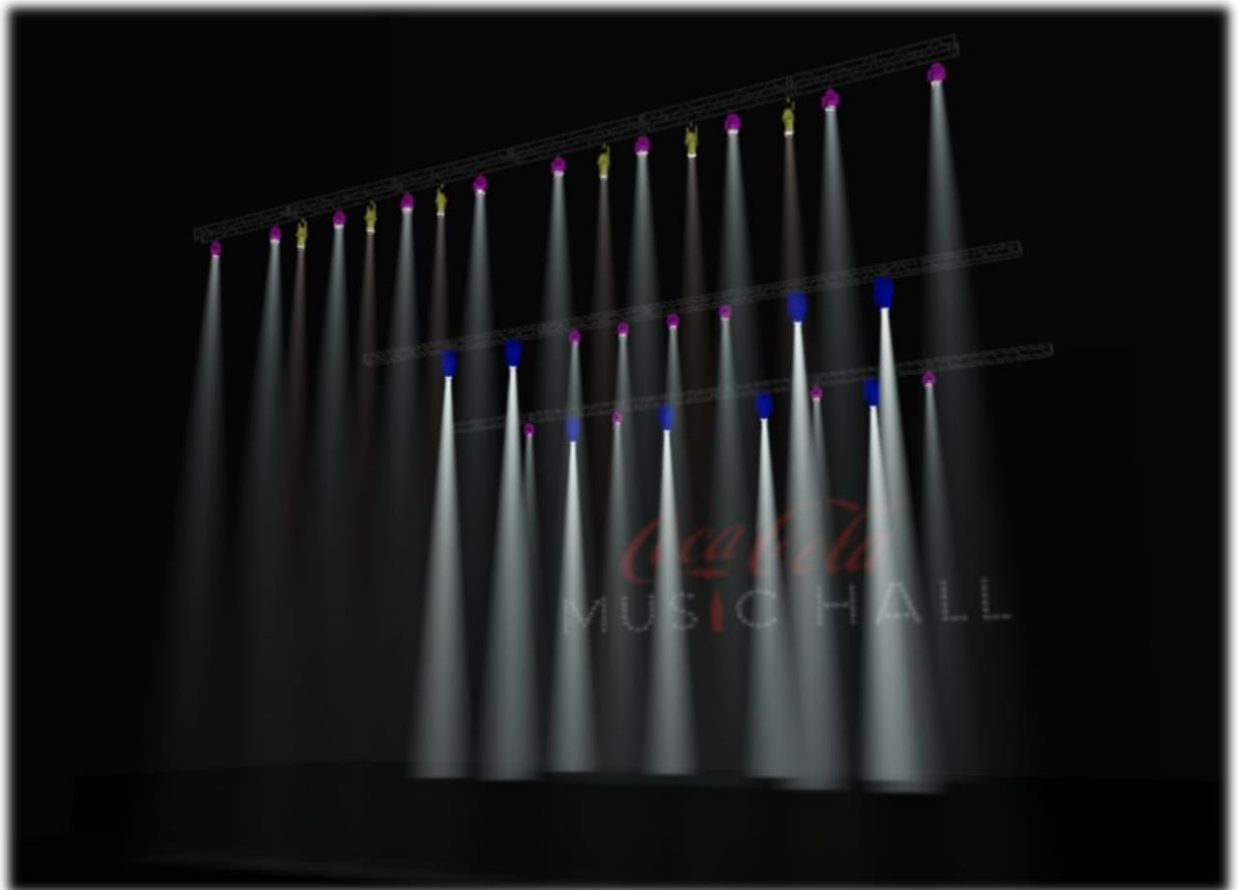


*Exclusive provider

LIGHTING EQUIPMENT INFORMATION

- 24 Martin MAC ERA 600 Performance
- 18 Martin MAC Auras
- 4 Martin Blinders
- 12 Robe Pointe
- 1 Martin M6 Control Board
- 2 Martin Opto Splitter
- 2 Martin Haze Jem pro jr
- 1 Motion Lab Power Distro 208/120v 48ch
- 1 Black Truss 12"x50' (Back Truss)
- 1 Black Truss 12"x40' (Mid Truss)
- 1 Black Truss 12"x50 (Front Truss)
- 1 Motion lab Power Distro 48ch 120/208v

LIGHTING PLOT



*Lighting Plot could be modified according to Show Specifications and Production Manager requests.

VIDEO EQUIPMENT



PTZ CAMERA SYSTEM

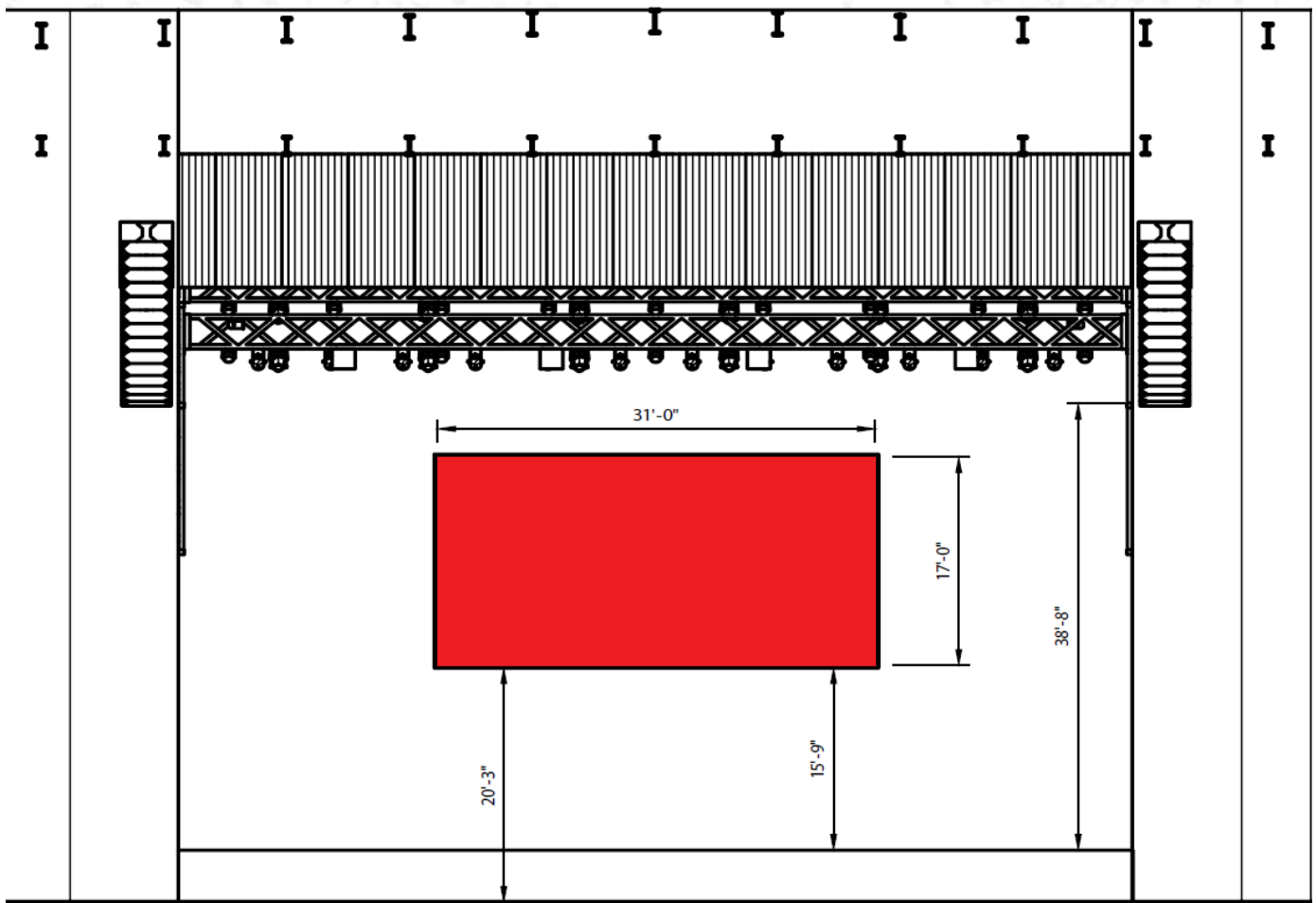
(Please contact Event Manager for Cost Estimate, PTZ System service not included under facility contract)

Five (5)	Panasonic	AW-HE40S	PTZ Camera – L/R/C/Backstage and Audience
Five (5)	Panasonic	AW-HE40S	PTZ Camera – L/R/C/Backstage and Audience
Five (5)	AJA	Fido TST	Fiber Tx
Five (5)	AJA	Fido TST	Fiber Rx
One (1)	Panasonic	RP50NJ	PTZ Camera Controller
One (1)	Ross	CF116MM	Carbonite Switcher
One (1)	AJA	KIPRO Rack	Solid State Recorder
Three (3)	Samsung	DC32E	32” Commercial Monitor
Three (3)	Chief	MTM1U	Display Mount
One (1)	Integration	Material	Cables, Connectors, Lift Rental, Etc.
One (1)	Integration	Labor	Design and Integration Labor
One (1)	Integration	Travel	Travel & Expenses
Five (5)	Sony	BRC 800	PTZ Camera – L/R/C/Backstage and Audience
One (1)	Sony	RMIP10	PTZ Camera Controller



NO
DRONE
ZONE

LED SCREEN INFORMATION



Resolution: 1,600 x 880

TECHNICIANS

Coca-Cola Music Hall have exclusive provider of audio, video & lighting technicians services. However, the production can bring their own personnel to work supervised by the house technicians.

- Hours and specifications:
 - The rent of Coca-Cola Music Hall includes one technician for each department (audio, video, lights). These technicians will cover basic needs for a simple equipment management. For more information, please contact Event Manager.
 - Coca-Cola Music Hall technicians work on a based 8hrs turn with a 1hr break. A basic turn example could be: *3:00pm - 12:00am (7pm-8pm break)*.
 - Coca-Cola Music Hall have other technician services that can be request by the production. This would be charged as an additional and the cost will vary depending on the skills and service requested. For more information, please contact Event Manager.

- Additional Technicians Rates:

The following rates are an approximately estimate based on 8 hours shift. Rates may vary depending on the service required.

 - FOH Sound Technician: \$580.00 (Starting rate)
 - FOH Lighting Technician: \$260.00 (Starting rate)
 - FOH Video Technician: \$260.00 (Starting rate)

POWER DISTRIBUTION INFORMATION

Stage Right

- (1) 200 Amps, Three Phase
- (2) 400 Amps, Three Phase

Stage Left

- (1) 100 Amps, Three Phase
- (1) 200 Amps, Three Phase

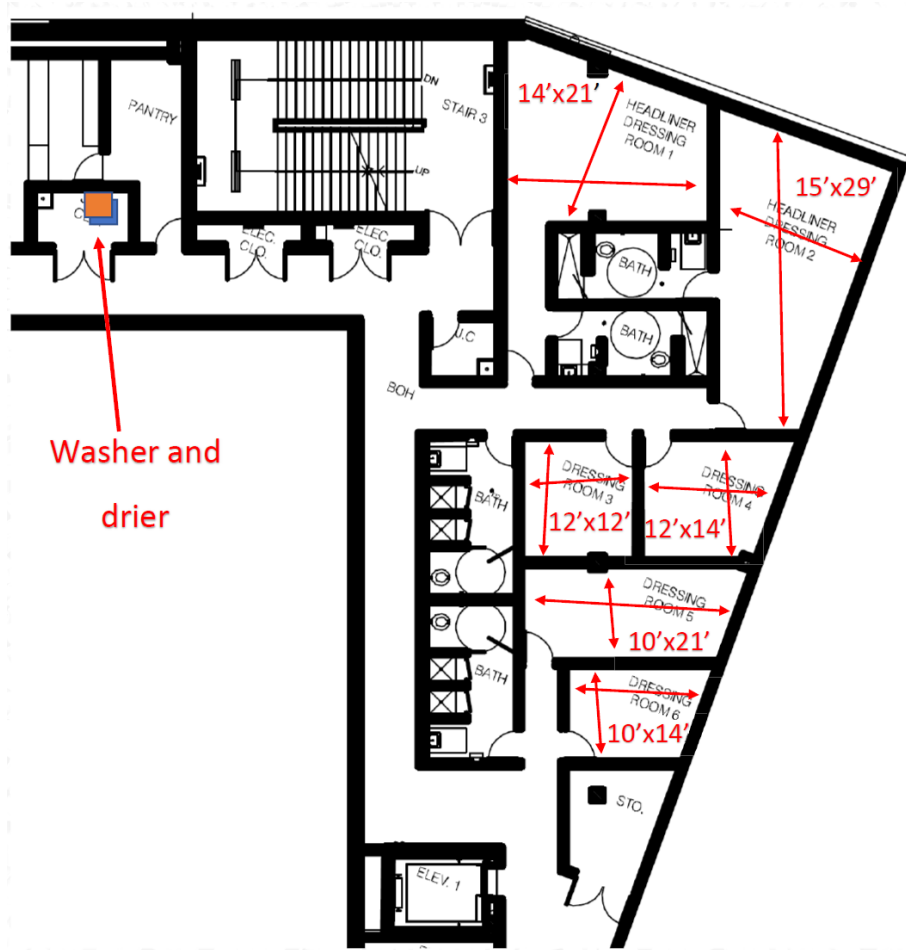


Camlock for each Electrical Panel

DRESSING ROOM INFORMATION

All rooms are located backstage. They are equipped with showers, toilets, mirrors, and chairs unless noted below.

BACKSTAGE AREA WITH MEASUREMENTS



Dressing Room 1	1-2 persons	Dressing Room 4	1-2 persons
Dressing Room 2	1-5 persons	Dressing Room 5	1-2 persons
Dressing Room 3	1-2 persons	Dressing Room 6	1-2 persons

DRESSING ROOM AMBIENTATION

Dressing Room 1:



Dressing Room 2:



LAUNDRY ROOM

The Coca-Cola Music Hall has one (1) laundry room. It is located backstage on the second floor (1m) near dressing rooms and the emergency exit stairs. The room is equipped with (1) washer with a capacity for 18-24 lbs. and (1) dryer 20-25lbs. and a single floor sink is available laundry detergent will be available.

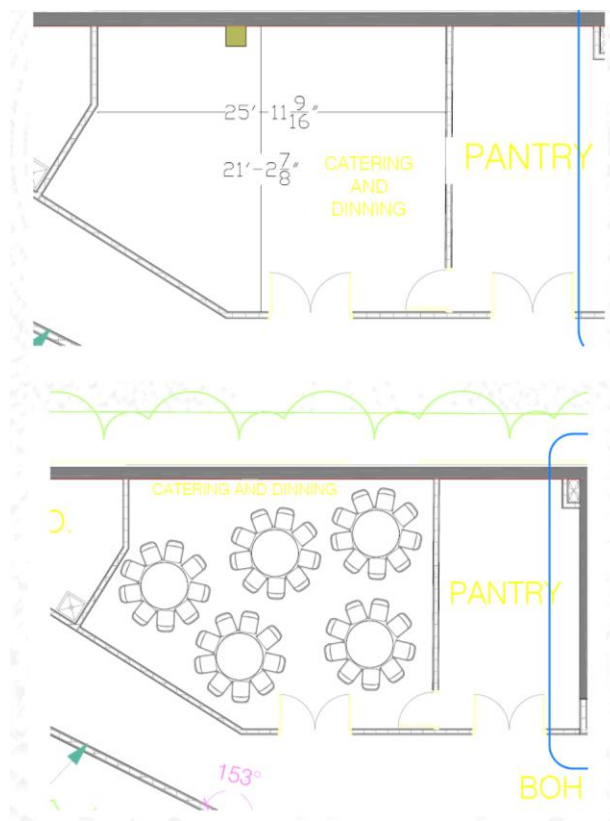


CATERING ROOM

Catering Services can be arranged via F&B department. For menus and pricing please contact F&B Manager Mr. José Torres, email: lvazquez@levyrestaurants.com, cell phone: (787)462-9001 or via Event Manager Ernesto Pérez, email erperez@cocacolamusichall.com, cell phone: (787)904-8730.

The Catering Room can also be used as a Rehearsal Room.

Revised information: Catering Room have space and electric capacity for a small kitchen area.



VEHICLE ADMISSION (EXHIBITION)

- Wrap wheels to avoid trail marks
- Use absorbing carpet to avoid fluid spill on floor
- Gas tank must be ¼ fill or less
- Vehicle needs to be turn off and battery disconnected
- Vehicle needs to be clean without dirt residuals
- Maximum size: 90”w X 100”h
- Maximum weight: 10,000 pounds
- Insurance (TBD)

*For more information please contact the Event Manager – Ernesto Pérez (787)904-8730
erperez@cocacolamusichall.com

On-Demand Internet Service

BANDWIDTH (MBPS) UP/DOWN	COST
10	\$428
20	\$646
30	\$780
50	\$1,014
100	\$1,545
200	\$2,574
300	\$2,964
500	\$4,680
1000	\$5,460

Terms and conditions:

1. Estimate must be signed and accepted with a minimum of one working week prior to the show date. Rush fee charges may apply if received after the deadline. The percentage will be determined by the Finance Department.
2. Once the estimate is signed and approved by the client is final.
3. Penalty charges will apply to any changes to the original work order. A percentage will be determined by the Finance Department.
4. No refunds will apply. ASM Global and our communications carrier will not be responsible for last-minute service cancellations.
5. Money will not be refunded, if approved by Finances Department, ASM Global will grant the client a credit to be used at the Coca-Cola Music Hall for a similar service, good for one year.

PRODUCTION OFFICE

Coca-Cola Music Hall does have a dedicated Production Office. As requested, additional chairs and tables can be added to existing dressing rooms. Please contact Event Manager to assure availability.

TELEPHONE LINES

Coca-Cola Music Hall has dedicated phone lines or wired internet access available in the building.

INTERNET SERVICES

Wireless internet access is available throughout backstage and production office. Coca-Cola Music Hall has dedicated internet circuit exclusively for events. A variety of bandwidth options are available to choose from that adapt to the client's needs. Please contact Event Manager for quotes.

